

THINK DESIGN **THINK HOMAPAL.**



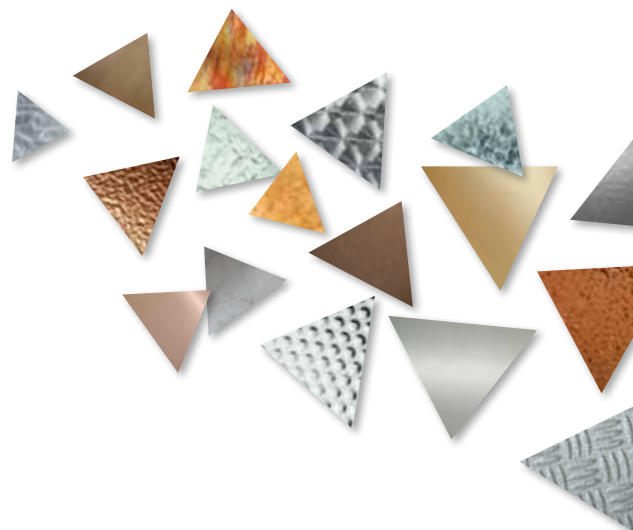




HOMAPAL® METALL

HOMAPAL® METAL

HOMAPAL® MÉTAL



Leuchtend warm oder kühl glänzend. Rustikal im Industrial Style, matt im Used-Look oder elegant mit graphischen Mustern. Neben allen technischen Vorteilen ist es vor allem der optische Aspekt, der bei HOMAPAL-Echtmetalllaminaten besticht.

HOMAPAL setzt dünn ausgewalzte Folien aus Aluminium, Kupfer, Messing und Edelstahl ein. Ein spezielles Prägeverfahren verleiht den Oberflächen ihre einzigartigen Strukturen. In der Manufaktur veredeln Mitarbeiter einige der Metalldekore gar in Handarbeit. Zusammen mit ihrer einzigartigen Farbwelt und dem prägnanten Glanz bieten die Metalle außergewöhnliche Haptik – eine unschlagbare Kombination, die sich kaum imitieren lässt.

Die HOMAPAL-Metallkollektion umfasst Dekore, die in ihrer Anmutung von klassisch bis modern, von edel bis vintage, von grob bis filigran reichen – jedes mit dem gleichen hohen Qualitätsanspruch.

Metalloberflächen von HOMAPAL sind schwer entflammbar gemäß IMO-Entscheidung MSC.307(88) - (FTP-Code 2010) Anlage 1, Teil 2*, Teil 5 (*=nicht anwendbar) und nach DIN EN 13501-1:2010-01 als B-s1, d0 klassifiziert. Die Dekore wurden nach DIN 717-1 auf die Abgabe von Formaldehyd untersucht und unterschreiten, sofern überhaupt nachweisbar, den Grenzwert der deutschen Chemikalienverordnung und den Richtwert des BGA für Innenräume.

Vibrant and warm or cool and shiny. Rustic in industrial style, matt in used look or elegant with graphic patterning. Besides all of the technical benefits, it is primarily the visual aspect that captivates with HOMAPAL's genuine-metal laminates.

HOMAPAL uses thinly rolled foils of aluminium, copper, brass and stainless steel. A special embossing technique gives the surfaces their unique texturing. In the manufacturing process, some of the metal decors are even finished by hand. Together with their unique range of colours and stunning lustre, these metals come with a feel that is truly exceptional – an unbeatable combination and hard to imitate.

The HOMAPAL metal collection features decors that range in look from classic to modern, from exquisite to vintage, from coarse to delicate – every one of them in the same high standard of quality.

Metal surfaces from HOMAPAL are flame-retardant in accordance with IMO resolution MSC.307(88) - (FTP Code 2010) Annex 1, Part 2, Part 5 (*=not applicable) and classified under DIN EN 13501-1:2010-01 as B-s1, d0. The decors have been tested for formaldehyde emission in accordance with DIN 717-1 and, where detectable at all, fall below the limit value defined in the German Chemicals Ordinance (Chemikalienverordnung) and the guide value set by the German Federal Health Agency (BGA) for indoor areas.*

Couleurs chatoyantes ou froides et brillantes. Industrial Style rustique, Used Look mat ou motifs graphiques élégants. Outre tous les avantages techniques, les stratifiés à revêtement en métal réel HOMAPAL se distinguent surtout par leur esthétique.

HOMAPAL utilise de minces feuilles d'acier inoxydable, de cuivre, de laiton ou d'aluminium laminées. Un procédé spécial confère aux surfaces leurs structures uniques. Dans la manufacture, les employés finissent même certains des décors métalliques à la main. Avec leurs nuances exceptionnelles et leur brillance remarquable, les métaux sont très agréables au toucher – une qualité inégalée, un concept inimitable.

La collection métallique HOMAPAL propose des décors élégants, classiques ou modernes, nobles ou vintage, grossiers ou fins, tous de qualité intransigeante.

Les surfaces métalliques HOMAPAL sont difficilement inflammables conformément aux normes d'essai Résolution MSC.307(88) de l'OMI - (recueil FTP 2010), annexe 1, partie 2, partie 5 (*=non applicable) et DIN EN 13501-1:2010-01 (classement de comportement au feu Euroclasse B-s1, d0). Les décors ont été testés quant à l'émission de formaldéhyde en vertu de la norme DIN 717-1 et, dans la mesure où elles sont quantifiables, les valeurs sont inférieures au seuil prescrit par le règlement allemand sur les substances/produits chimiques et aux recommandations du Bundesgesundheitsamt (BGA) pour l'intérieur.*



KUPFER / MESSING

COPPER / BRASS



630
Kupfer Relief Patiniert
Copper Black Patinated



636/502
Kupfer Moon Dunkel
Copper Moon Dark

KUPFER MOON DUNKEL COPPER MOON DARK

Der „used look“, das Gebrauchte und Abgenutzte, das sich in diesem Dekor widerspiegelt, erzeugt eine Spannung, mit der der Innenausbau lebendige Impulse erfährt.

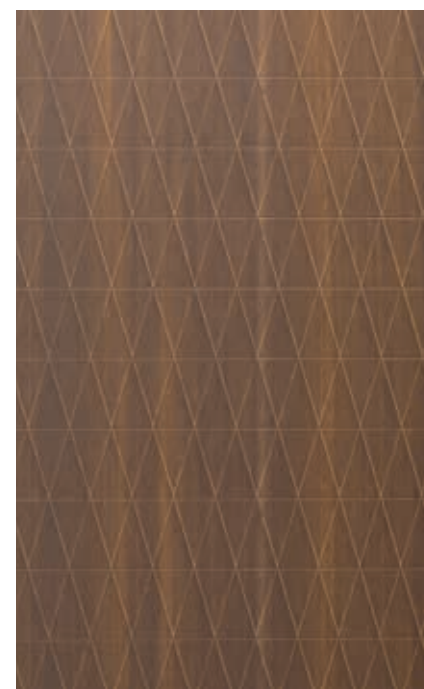
The „used look“ that is reflected in this decor creates a tension that is imbued with living impulses when used in interior design.



807/340
Alu Relief Diamond Bronzeton
Alu Diamond Bronzeton



690/340
Kupfer Diamond Antique
Copper Diamond Antique

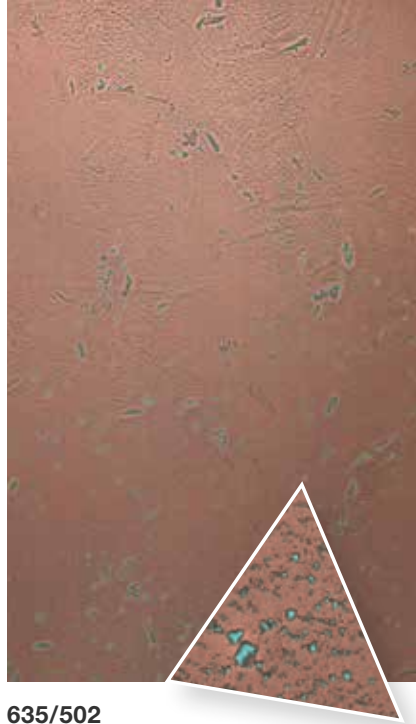


500/340
Messing Diamond Antique (Stoßfuge bei Breite von ca. 610 mm)
Brass Diamond Antique (vertical joint at abt. 610 mm)

KUPFER / MESSING COPPER / BRASS



637/502
Kupfer Moon Hell
Copper Moon Light



635/502
Kupfer Moon Türkis
Copper Moon Turquoise



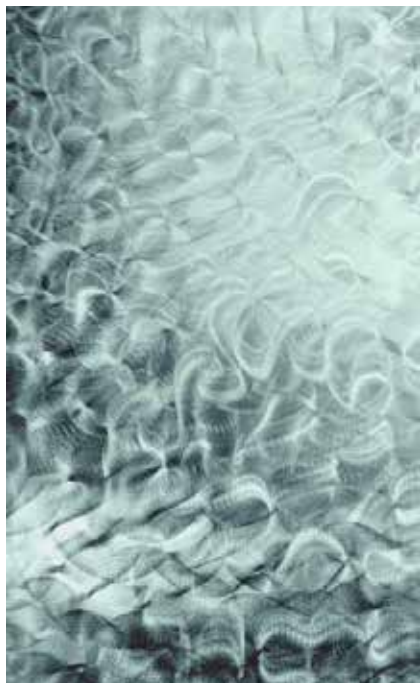
500/502
Messing Moon
Brass Moon

(Stoßfuge bei Breite von ca. 610 mm)
(vertical joint at abt. 610 mm)

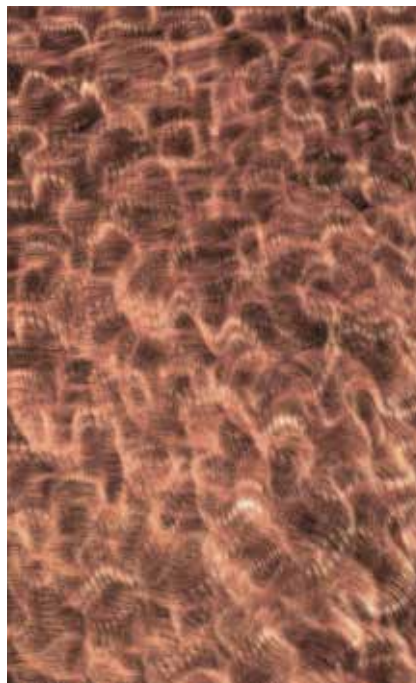


KUPFER / ALUMINIUM

COPPER / ALUMINIUM



800/200
Alu-Glatt Crush
Alu Crush



401/200
Kupfer-Glatt Crush
Copper Crush



401/229
Kupfer-Glatt Crush Stipple
Copper Crush Stipple

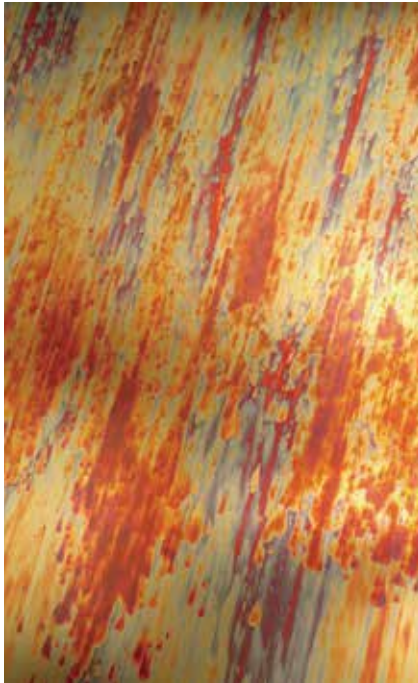


805/400
Alu-Relief Matrix Champagnerton
Alu Matrix Champagne



809/400
Alu-Relief Matrix Anthrazit
Alu Matrix Anthracite

KUPFER / MESSING COPPER / BRASS



695D
Kupfer-Glatt Stratos Diagonal
Copper Stratos Diagonal



500/491
Messing-Glatt Antik
Brass Plain Antique
(Stoßfuge bei Breite von ca. 610 mm)
(vertical joint at abt. 610 mm)



490
Kupfer-Glatt Antik
Copper Antique



622G
Kupfer-Relief Herbstlaub
Copper Autumn Leaves





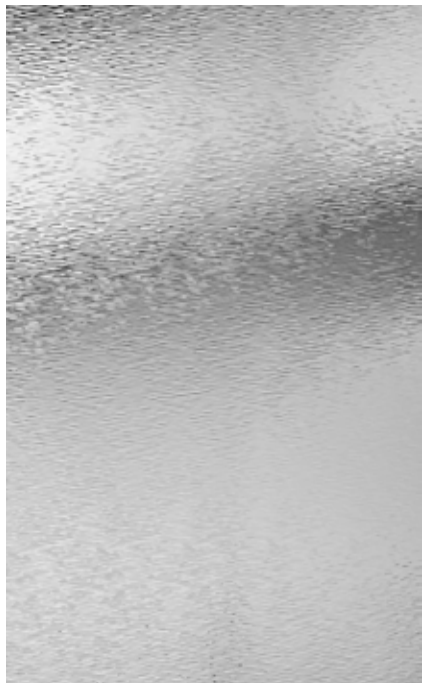
HANDWERKSKUNST

VON HOMAPAL®

CRAFTSMANSHIP BY HOMAPAL®

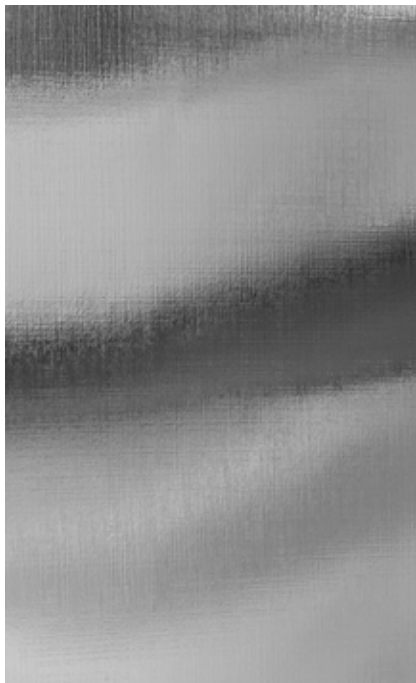
ALU-SPIEGELGLANZ

ALU-POLISHED



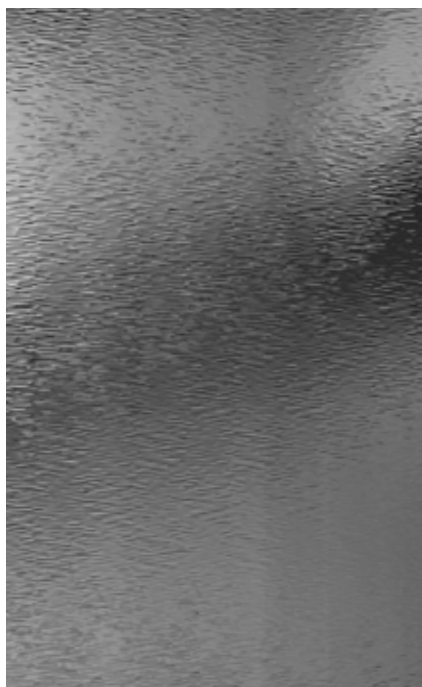
470/966

Alu-Spiegelglanz Cella Naturton
Alu Polished Cella Natural



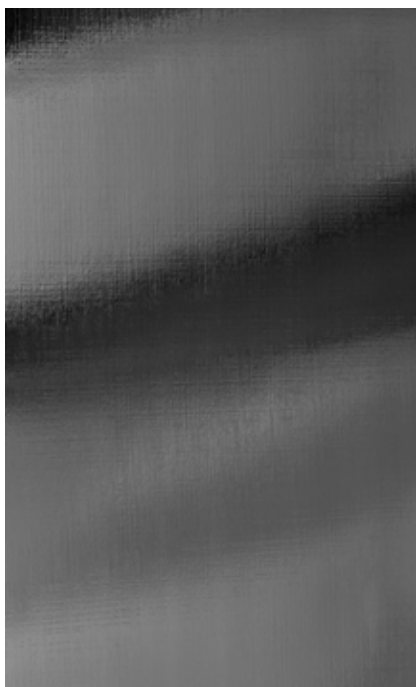
470/8226

Alu-Spiegelglanz Crossline Naturton
Alu Polished Crossline Natural



474/966

Alu-Spiegelglanz Cella Smokey Grey
Alu Polished Cella Smokey Grey



474/8226

Alu-Spiegelglanz Smokey Grey
Alu Polished Smokey Grey

ALU-SPIEGELGLANZ

ALU-POLISHED

**470/124**

Alu-Spiegelglanz Cascade Naturton
Alu Polished Cascade Natural

**474/124**

Alu-Spiegelglanz Cascade Smokey Grey
Alu Polished Cascade Smokey Grey

**471/124**

Alu-Spiegelglanz Cascade Goldton
Alu Polished Cascade Goldtone

**477/124**

Alu-Spiegelglanz Cascade Kupferton
Alu Polished Cascade Coppertone

**473/124**

Alu-Spiegelglanz Cascade Tea
Alu Polished Cascade Tea

ALU-SPIEGELGLANZ *ALU-POLISHED*



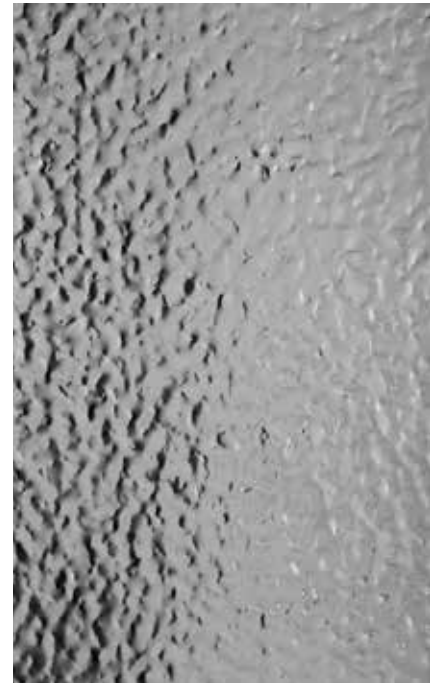
470/636

Alu-Spiegelglanz Lava Naturton
Alu Polished Lava Natural



474/636

Alu-Spiegelglanz Lava Smokey Grey
Alu Polished Lava Smokey Grey



475/636

Alu-Spiegelglanz Lava Gunmetal Matt
Alu Lava Gunmetal Matt



471/636

Alu-Spiegelglanz Lava Goldton
Alu Polished Lava Goldtone



477/636

Alu-Spiegelglanz Lava Kupferton
Alu Polished Lava Coppertone



473/636

Alu-Spiegelglanz Lava Tea
Alu Polished Lava Tea



ALU-SPIEGELGLANZ *ALU-POLISHED*



471/966

Alu-Spiegelglanz Cella Goldton
Alu Polished Cella Goldtone



477/966

Alu-Spiegelglanz Cella Kupferton
Alu Polished Cella Coppertone



473/966

Alu-Spiegelglanz Cella Tea
Alu Polished Cella Tea



470

Alu-Spiegelglanz Naturton Superior
Alu Polished Superior Natural



474

Alu-Spiegelglanz Smokey Grey
Alu Polished Smokey Grey



475

Alu-Spiegelglanz Gunmetal Matt
Alu Polished Gunmetal Matt

ALU-SPIEGELGLANZ

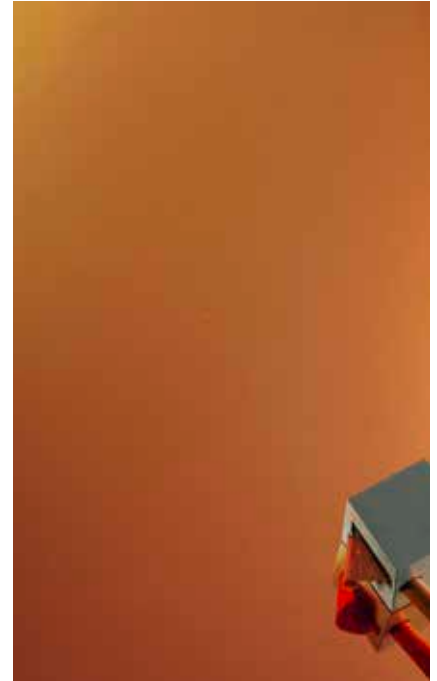
ALU-POLISHED



471
 Alu-Spiegelglanz Goldton
Alu Polished Goldtone



477
 Alu-Spiegelglanz Kupferton
Alu Polished Coppertone



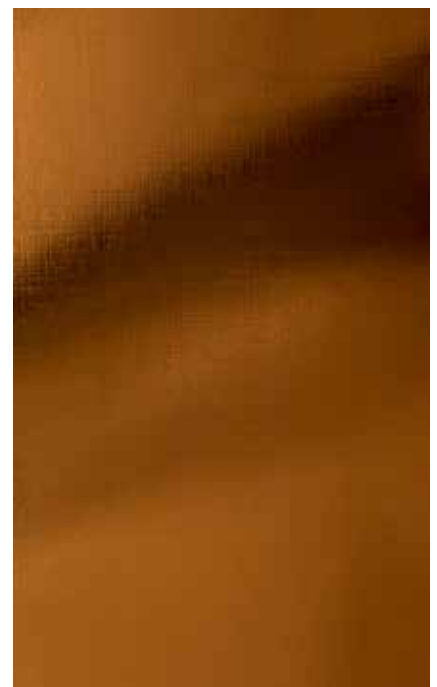
473
 Alu-Spiegelglanz Tea
Alu Polished Tea



471/8226
 Alu-Spiegelglanz Crossline Goldton
Alu Polished Crossline Goldtone



477/8226
 Alu-Spiegelglanz Crossline Kupferton
Alu Polished Crossline Coppertone



473/8226
 Alu-Spiegelglanz Crossline Tea
Alu Polished Crossline Tea

MESH

MESH



825/100
Alu-Relief Mesh Champagnerton
Alu Mesh Champagne



800/100
Alu-Relief Mesh
Alu Mesh Natural



470/100
Alu-Spiegelglanz Mesh Naturton
Alu Polished Mesh Natural



471/100
Alu-Spiegelglanz Mesh Goldton
Alu Polished Mesh Goldtone



809/101
Alu-Relief Mesh Vintage
Alu Mesh Vintage



459/100
Alu-Relief Mesh Anthrazit
Alu Mesh Anthracite

MESH

MESH



MESH

MESH

Unser MESH erhält seine authentische Ausstrahlung auf Grundlage natürlicher Materialien.

The authentic view of our MESH is based on natural materials.

451/100

Alu-Relief Mesh Bronzeton
Alu Mesh Bronzeton



STRICHMATT-STRUKTUR

BRUSHED-STRUCTURE



434
Alu-Kreuzstrichmatt Goldton
Alu Crossbrushed Goldtone



431
Alu-Kreuzstrichmatt Naturton
Alu Crossbrushed Natural



439
Alu-Kreuzstrichmatt Taupe
Alu Crossbrushed Brownish Grey



802/970
Alu-Relief Martelé Goldton
Alu Martelé Goldtone



807/970
Alu-Relief Martelé Bronzeton
Alu Martelé Bronzeton



809/970
Alu-Relief Martelé Anthrazit
Alu Martelé Anthracite

STRICHMATT-STRUKTUR

BRUSHED-STRUCTURE



704/966

Alu-Relief Cella Goldton
Alu Brushed Cella Goldtone



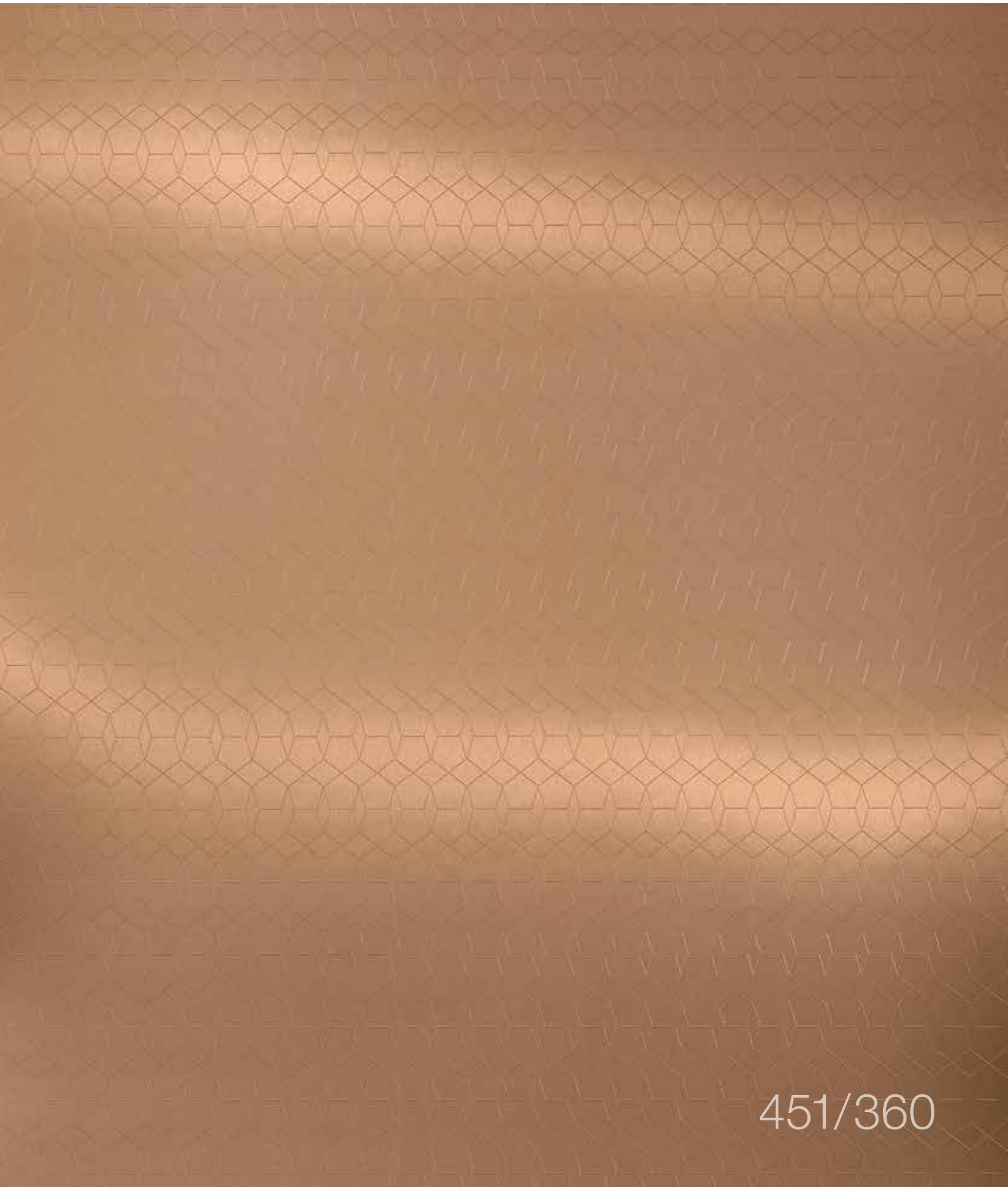
447/966

Alu-Relief Cella Kupfer-ton
Alu Cella Coppertone



448/966

Alu-Relief Cella Schwarz
Alu Cella Black



451/360

SAPPHIRE

SAPPHIRE



325/360

Alu-Strichmatt Sapphire Champagnerton
 Alu Brushed Sapphire Champagne



454/360

Alu-Strichmatt Sapphire Rosé Gold
 Alu Brushed Sapphire Rosegold



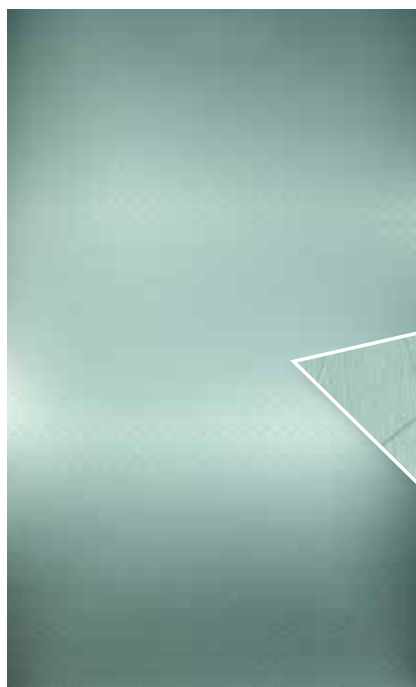
451/360

Alu-Strichmatt Sapphire Bronzeton
 Alu Brushed Sapphire Bronzeton



455/360

Alu-Strichmatt Sapphire Dunkelgrau
 Alu Brushed Sapphire Graphite



332/360

Alu-Strichmatt Sapphire Oxygreen
 Alu Brushed Sapphire Oxygreen

NEW CRISP

NEW CRISP



NEU

800/252
Alu New Crisp
Alu New Crisp



804/252
Alu New Crisp Gold
Alu New Crisp Goldtone



834/252
Alu New Crisp Rose
Alu New Crisp Rose



832/252
Alu New Crisp Oxygen
Alu New Crisp Oxygen



809/252
Alu New Crisp Anthrazit
Alu New Crisp Anthracite



690/252
Kupfer New Crisp Antique
Copper New Crisp Antique



ALU STRICHMATT

ALU BRUSHED



441
Alu-Strichmatt Naturton
Alu Brushed Natural



444N
Alu-Gebürstet Naturton
Alu Brushed Natural



446
Alu-Strichmatt Stahlton
Alu Brushed Steeltone



456
Alu-Strichmatt Bronzeton Medium
Alu Brushed Medium Bronzeton



325
Alu-Strichmatt Champagnerton
Alu Brushed Champagne



442
Alu-Strichmatt Goldton
Alu Brushed Goldtone

ALU STRICHMATT

ALU BRUSHED



426/000

Alu-Longline Stahlton
Alu Longline Steeltone



425/000

Alu-Longline Champagnerton
Alu Longline Champagne



429/000

Alu-Longline Bronzeton
Alu Longline Bronzestone



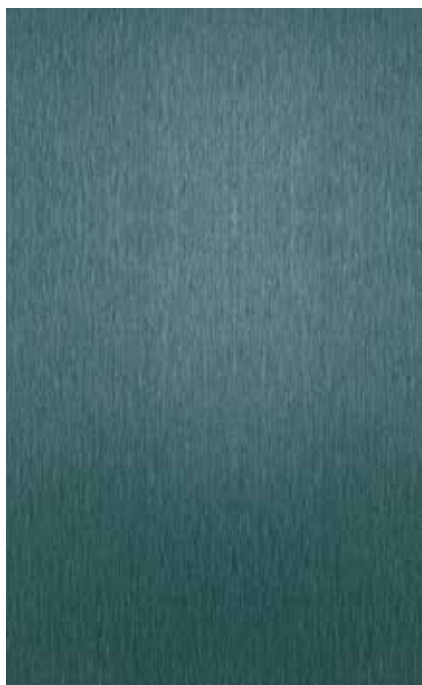
682

Alu-Satiniert Stahlton
Alu Satin Steeltone



ALU STRICHMATT

ALU BRUSHED



455/000

Alu-Strichmatt Dunkelgrau
Alu Brushed Graphite



448

Alu-Strichmatt Schwarz
Alu Brushed Black



454

Alu-Strichmatt Rosé Gold
Alu Brushed Rosegold



447

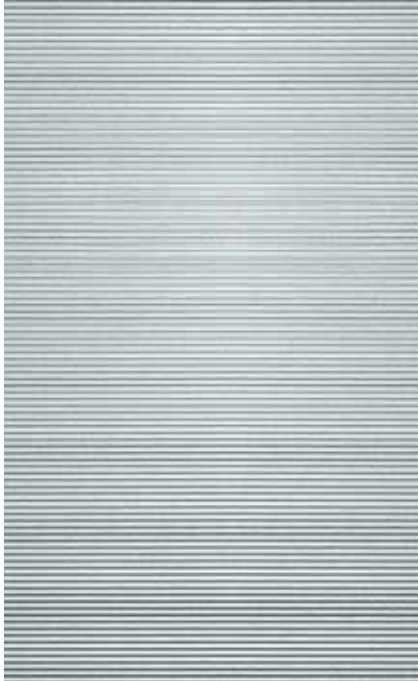
Alu-Strichmatt Kupfer-ton
Alu Brushed Copper-tone



451

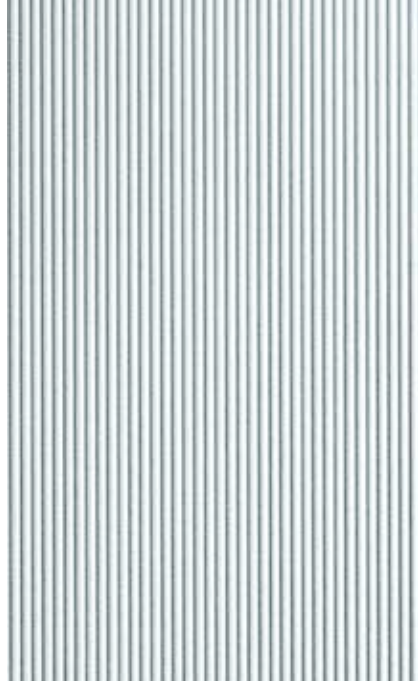
Alu-Strichmatt Bronzeton
Alu Brushed Bronze-tone

KLASSIKER CLASSICS



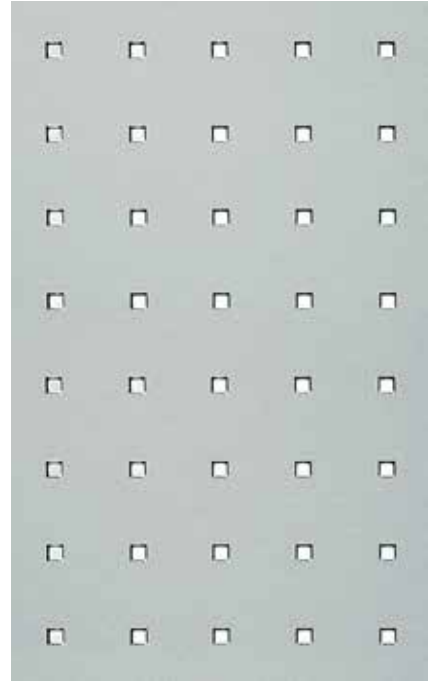
444/920N

Alu-Relief Riffel „quer“
Alu Riffel Horizontal Natural



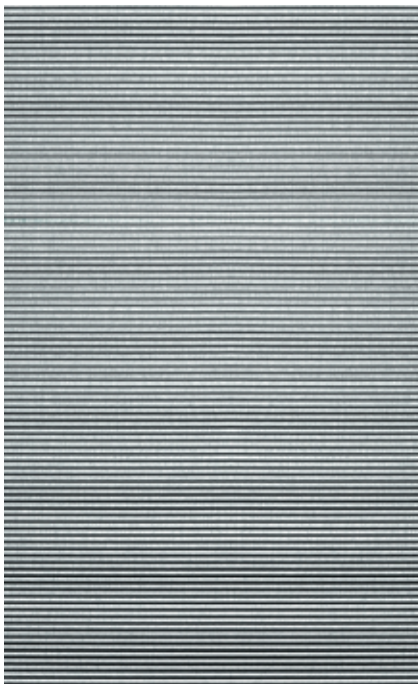
444/930N

Alu-Relief Riffel „längs“
Alu Riffel Vertical Natural



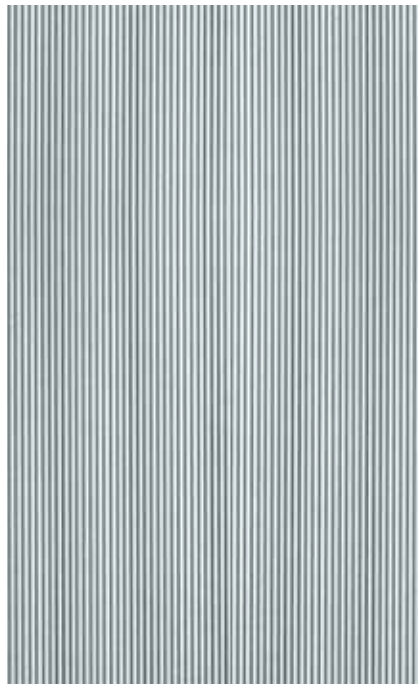
444/370N

Rivet III Naturton
Alu Rivet III Natural



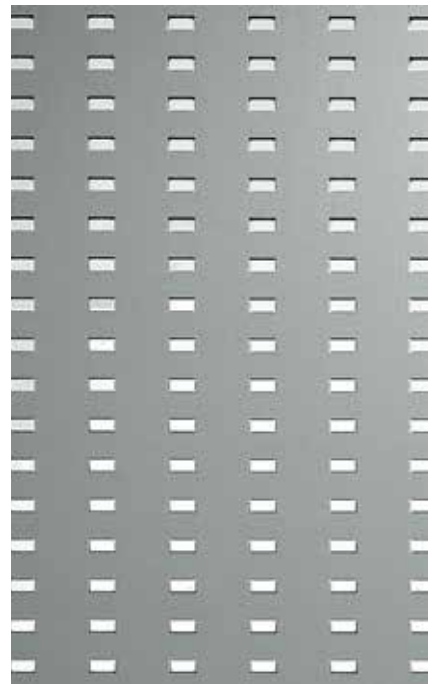
446/920

Alu-Relief Riffel „quer“ Stahlton
Alu Riffel Horizontal Steeltone



446/930

Alu-Relief Riffel „längs“ Stahlton
Alu Riffel Vertical Steeltone

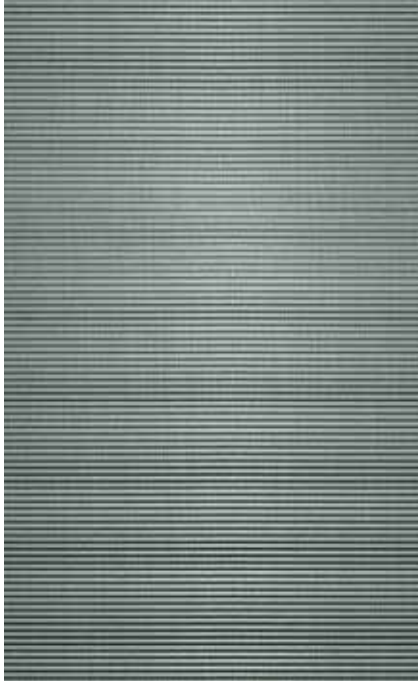


346/770N

Rivet V Stahlton
Rivet V Steeltone

bitte Rapport beachten, s. technische Daten
please note rapport as per technical data

KLASSIKER CLASSICS



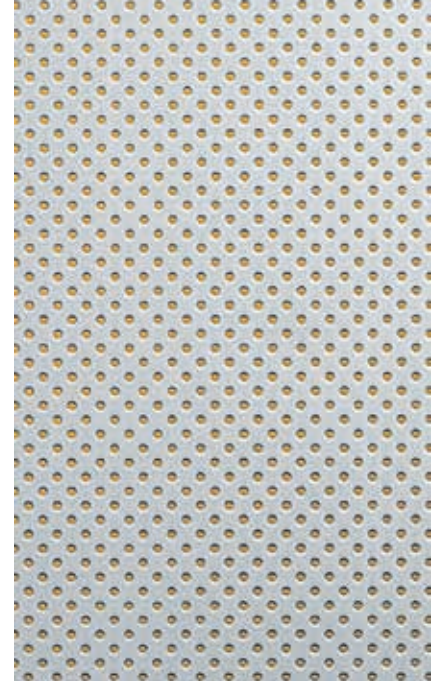
469/920N

Alu-Relief Riffel „quer“ Anthrazit
Alu Riffel Horizontal Anthracite



856

Alu-Relief Dots Stahlton
Alu Dots Steeltone



800/852

Alu-Relief Bico Small
Alu Bico Small



444/860N

Alu-Relief Footplate
Alu Brushed Natural Footplate



866

Alu-Relief Footplate Stahlton
Alu Footplate Steeltone



346/970N

Rivet Flora
Rivet Flora

bitte Rapport beachten, s. technische Daten
please note rapport as per technical data

KLASSIKER CLASSICS



820/000
Alu-Gebürstet Softmatt Naturton
Alu Softmatt Natural



791
Alu-Strichmatt Naturton Spezial
Alu Brushed Natural Special



796
Alu-Strichmatt Stahlton Spezial
Alu Brushed Steeltone Special



480/000
Alu-Spiegelglanz Normal Naturton
Alu Polished Standard Natural



485/000
Alu-Spiegelglanz Spezial Naturton
Alu Polished Special Natural



794
Alu-Strichmatt Goldton Spezial
Alu Brushed Goldtone Special

EDELSTAHL

STAINLESS STEEL



641/000

Edelstahl Gebürstet
Stainless Steel Brushed



600/600

Edelstahl Wheels
Stainless Steel Wheels





HOMAPAL® PRODUKTINFORMATION

HOMAPAL® PRODUCT INFORMATION

INFORMATIONS SUR LE PRODUIT



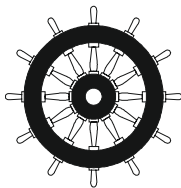
Klassifizierung des Brandverhaltens nach DIN EN 13501-1:2010-01 für die Kollektion Metall.

Fire classification according to DIN EN 13501-1:2010-01 for the collection Metal.



Klassifizierung Formaldehydabgabe nach DIN EN 717-1.

Classification formaldehyd release according to DIN EN 717-1.



IMO-zertifiziert: USCG Approval no.
Metall: 164.112/EC0736/118.083
Holz: 164.112/EC0736/118.173

*IMO-certified: USCG Approval no.
Metal: 164.112/EC0736/118.083
Veneer: 164.112/EC0736/118.173*



The mark of responsible forestry

Nur die als FSC® gekennzeichneten Produkte sind FSC® zertifiziert.

Only products marked with FSC® are FSC® certified.